

Trombone 1

Lost Boy

by Ruth B
arr Molly Rose

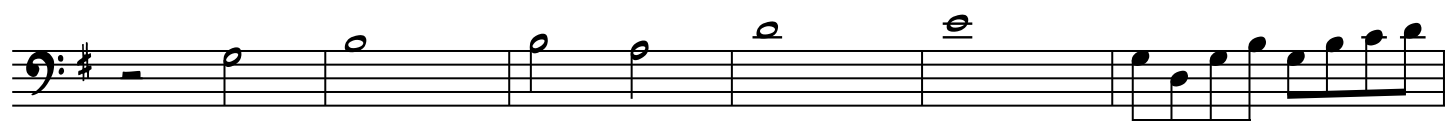
Intro



Verse 1



13

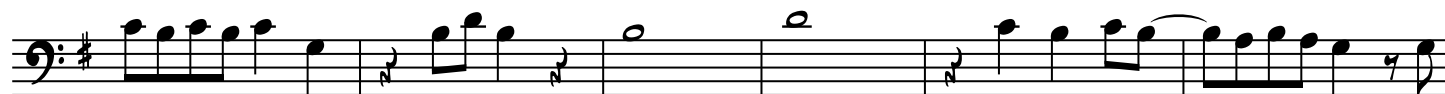


23

Chorus 1



29

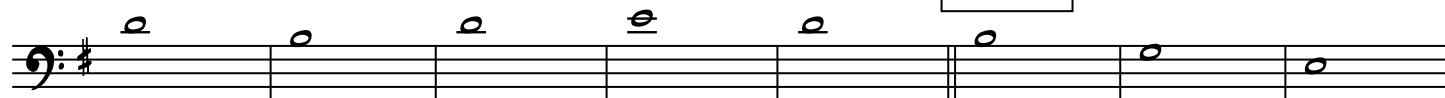


35



41

Verse 2



48



56

Trombone 1-Lost Boy-2



64

Chorus 2



72



77



82



88



93

Bridge



97



104



110

Trombone 1-Lost Boy-3

Chorus 3

Measures 116-120 of the Chorus 3 section. The staff is in bass clef with a key signature of one sharp (F#). The melody consists of eighth and quarter notes, with some measures containing rests.

116

Measures 121-125 of the Chorus 3 section. The staff continues the melody with eighth and quarter notes, including some measures with rests.

121

Measures 126-130 of the Chorus 3 section. The staff features a mix of eighth and quarter notes, with some measures containing rests.

127

Outro

Measures 131-133 of the Outro section. The staff shows a few notes followed by several measures of whole rests, ending with a double bar line.

133